

2019

BAY STAR/SPORT *gas motor coaches*



SAY HELLO *to* SUBSTANCE

While competitors may greet you with stick-on graphics, faux wood cabinetry, and a level of fit and finish that doesn't look or feel, well, finished, one look at Bay Star and Bay Star Sport is all it takes to discover that these are no ordinary gas-powered coaches. Engineered and assembled to the Newmar standard of quality, both models present a higher level of style, refinement, and versatility by way of 16 combined floor plan selections decorated by contrasting fabrics, carved wood accents, and more.

BAY STAR ELDORADO DÉCOR *(Pictured)*





style with good

THE 2019 BAY STAR SPORT

FLOOR PLANS

6 available at 27, 28, 30, 32, and 33 feet

HIGHLIGHTS & AMENITIES

18-22,000 lb. Ford® F-53 chassis with hydraulic leveling jacks

Carefree of Colorado® power side awning and automatic entrance steps

Cummins® Onan generator, lit exterior storage, and frameless windows

Side and rearview cameras and power side mirrors with defrost

Mustang full-paint Masterpiece™ finish

Space for all



LOOKS MADE *for* LIFE

Demonstrating the power of simplicity, the 2019 Bay Star Sport brings a minimalist design approach to the forefront, with dark Mustang décor fabrics complemented by a light Astoria wood finish. Enlivened by standard LED lighting, Bay Star Sport acts as a natural host, thanks to the dropdown bunk bed or bunk sofa available on select floor plans. And with two in-coach Wi-Fi options available along with a Vizio® LED TV and DVD player, it's obvious that this is a coach purpose-built for the modern family.

74-INCH JACKKNIFE SOFA

Floor plan 3014 with Mustang décor | Astoria glazed maple wood cabinetry



Available 12 cu. ft. refrigerator

great taste all around

THE *right* INGREDIENTS

Bay Star Sport serves up a galley that's equal parts flavorful and accommodating, positioning a stainless steel double-bowl sink surrounded by a solid-surface countertop across from an available dinette booth. A chrome mosaic backsplash adds style, while glazed hardwood cabinet doors tout concealed hinges and come decorated with brushed nickel door and drawer hardware. What's more, an available four-door refrigerator offers plenty of room for leftovers.



Take a look around



Travertine-patterned vinyl tile flooring



SOLID-SURFACE WOOD VANITY

LOVE *the* JOURNEY

Modern technology and innovative breakthroughs make open-road travel in the 2019 Bay Star Sport a breeze. The cockpit features an available power-adjustable driver's seat and stowable table along with a standard passenger workstation. And with a Bluetooth®-compatible Sony® radio, custom-tuned JBL® speakers, and available Rand McNally® navigation, both entertainment and direction are easy to find. Choose floor plan 3014 and access an enclosed mid-ship bath led by an expansive 40"x 30" shower.

Take it all with you



BASK *in* THE GLOW

Make peaceful nights and sun-filled mornings a part of your everyday routine with Bay Star Sport, where each floor plan is enhanced by an extra-large bedroom window, Vizio® LED TV, and a redesigned wardrobe space that includes a large shirt closet and five mitered hardwood drawers. A standard queen-size bed is upgraded to a king on floor plan 3226, while character is added courtesy of layered window treatments and an upholstered headboard with rectangular padding.



BACKLIT SLIDEOUT FASCIA

Ready for adventure



GO THERE *do that*

The 2019 Bay Star Sport is equipped to take you and your family far beyond the local campground, with an available 5.5 kW generator, standard hydraulic leveling jacks, and a generous allotment of well-lit basement storage space. And if you're planning to frequent cold-weather states, frameless windows can be upgraded to a new double-pane variety, while power side mirrors also include a defrost feature.

EXTERIOR *and* INTERIOR DÉCOR



MUSTANG EXTERIOR

Awning Color: Sierra Brown



MUSTANG INTERIOR

a. Furniture/ Fabric b. Carpet c. Counter Top



PALOMINO EXTERIOR

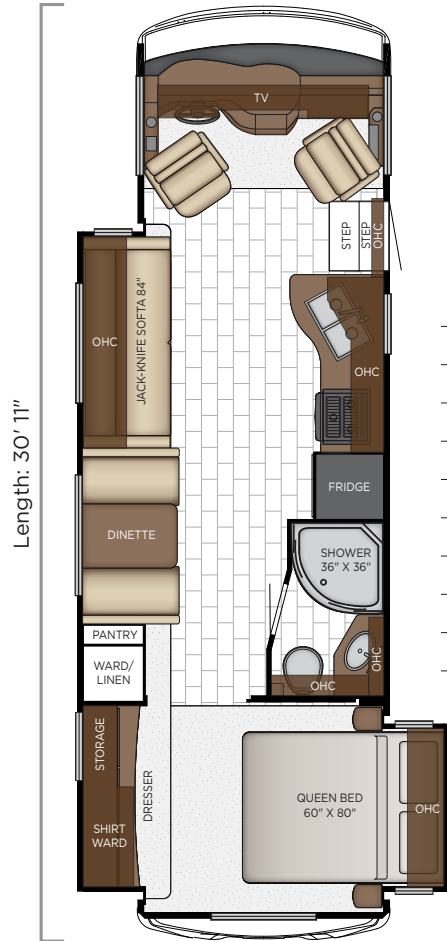
Awning Color: Black/Gray



PALOMINO INTERIOR

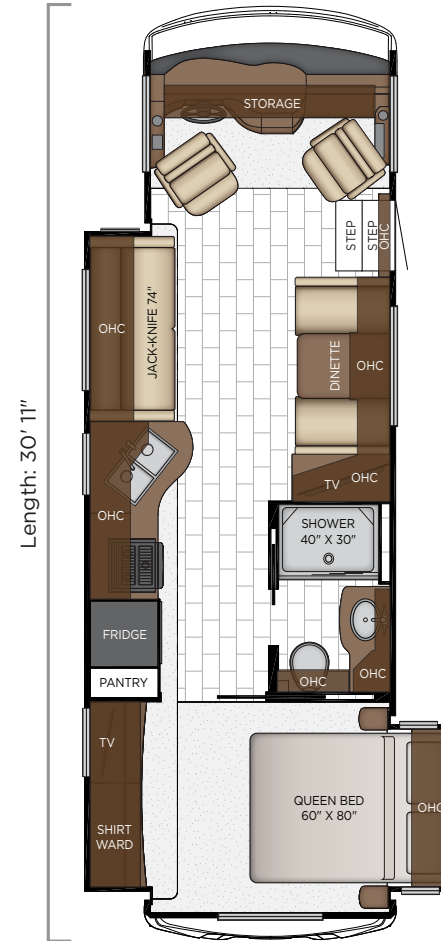
a. Furniture/ Fabric b. Carpet c. Counter Top

BAY STAR SPORT



3008

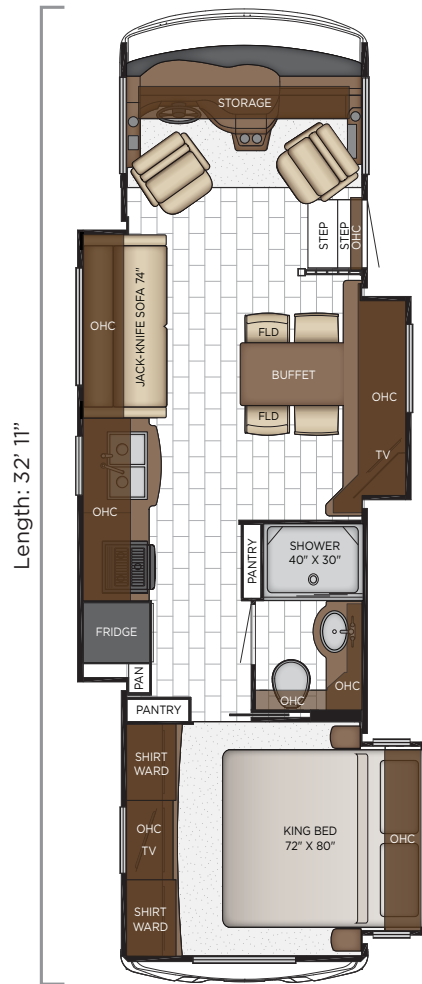
Length	30'11"
Width	101.5"
App. Overall Height	12'04"
Interior Width	95.5"
Interior Height	80"
Grey Tank	60 gal.
Sewage Tank	40 gal.
Water Tank	75 gal.
Propane Tank	25 gal.
Furnace	30,000 btu



3014

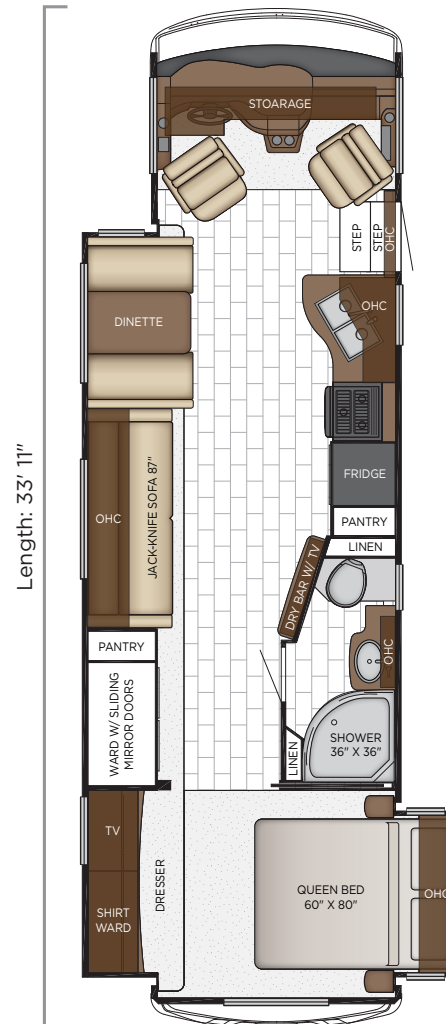
Length	30'11"
Width	101.5"
App. Overall Height	12'04"
Interior Width	95.5"
Interior Height	80"
Grey Tank	60 gal.
Sewage Tank	40 gal.
Water Tank	75 gal.
Propane Tank	25 gal.
Furnace	35,000 btu

FLOOR PLANS



3226

Length	32'11"
Width	101.5"
App. Overall Height	12'04"
Interior Width	95.5"
Interior Height	80"
Grey Tank	60 gal.
Sewage Tank	40 gal.
Water Tank	75 gal.
Propane Tank	25 gal.
Furnace	30,000 btu



3307

Length	33'11"
Width	101.5"
App. Overall Height	12'04"
Interior Width	95.5"
Interior Height	80"
Grey Tank	60 gal.
Sewage Tank	40 gal.
Water Tank	75 gal.
Propane Tank	25 gal.
Furnace	30,000 btu



EXTERIOR FEATURES

Exterior Masterpiece Full Painted Graphics with Clearcoat Finish

Dura Shield Protection on Front Cap

Lighted Exterior Storage Compartments

Automatic Step for Entrance Door

Convex Exterior Mirrors with Defrost & Remote Control

Rear Hitch for Towing Car

Assist Handle at Entrance Door

Undercoating

Mud Flaps

Hydraulic Leveling Jacks

OPTIONS

Rear Ladder

Flagpole Bracket

CONSTRUCTION FEATURES

BriteTEK™ Roof with Walkable Deck

Gelcoated Fiberglass Exterior Sidewalls, Front & Rear Caps

Aluminum-Frame Sidewalls & Roof Construction, on 16" Center

5/8" Foam Insulation Laminated in Sidewalls & Ceiling

Automatic Mechanical Lock Arms on Bedroom Slideout Room - Scissor Style - 2813 Only



WINDOWS, AWNINGS & VENTS

One Piece Tinted Windshield

Frameless Single Pane Tinted Safety Glass Windows

Power Vent in Kitchen & Bathroom

Skylight Above Shower

Carefree Travel'r Side Awning

Rear Window*

OPTIONS

Slideout Covers

Frameless Double-Pane Tinted Safety Glass Windows

Egress Door with Ladder System*

CHASSIS FEATURES

Ford® F-53 Chassis 18,000 lb. on 27' Floor Plans

Ford® F-53 Chassis 20,500 lb. on 28'-32' Floor Plans

Ford® F-53 Chassis 22,000 lb. on 33' Floor Plans

Cruise Control

Tilt Steering Wheel

Stainless Steel Wheel Simulators

Anti-Lock Braking System

AIR CONDITIONING & HEATING

13.5M Brisk® Central Air Conditioner

Dash Heater and Air Conditioner

Propane Gas Furnace with Ducted Heat

Driver & Passenger Overhead Dash Fans

OPTIONS

15.0M Penguin™ Heat Pump Central Air Conditioner

Two 13.5 Penguin Heat Pump A/C, 5.5 Onan Generator, 50 Amp Electrical Service with Energy Management System*

ELECTRICAL FEATURES

4.0 kW Cummins Onan® Generator with Remote Switch and Automatic Changeover

30 Amp Electrical Service with Flexible Cord and Automatic Transfer Switch

Two 12 Volt House Batteries

Manual Battery Disconnect Switch for House Battery

12 Volt Auxiliary Receptacle on Dashboard

45 Amp Converter

Daytime Running Lights

Emergency Engine Start Switch

LED Interior Lighting

Manually Operated Hold-To-Run Slideout Switch

Cable TV Connection

USB Outlet at Dash for Driver Use

Drain Lift Pump with 1000 Inverter*

OPTIONS

1000 Watt Inverter Run to TV's*



PLUMBING & BATH FEATURES

- Demand Water System
- Sewage Holding-Tank Rinse
- Water Heater Bypass System
- Dometic® 310 China Bowl Stool
- ABS Shower Surround with Shower Door
- Systems Monitor Panel

INTERIOR FEATURES

- Vinyl Ceiling Panels
- Pleated Window Shades
- Decorative Wall Art*
- Mini Blinds in Kitchen and Bathroom Windows
- Vinyl Floor in Kitchen, Living Area and Bathroom
- Carpeting in Bedroom and on Slideout Floors
- Interior Assist Handle at Main Entrance Door
- Quilted Bedspread and Accent Pillow
- Inlaid Six Panel Design Interior Passage Swing Doors
- Auto-Motion Power Shade at Windshield & Manual Shades at Driver & Passenger Side Windows
- Dash Panel Color Coordinated ABS
- Integrated Window Blind System on Entry Door

CABINETS & FURNITURE

- Calypso Glazed Maple Mitered Designer Cabinet Doors-Matte Finish
- Concealed Hinges on Cabinet Doors
- Drawers with Full Extension Ball Bearing Guides
- Polished Solid Surface Countertop in Kitchen with Stainless Steel Sink
- Solid Surface Countertops in Bathroom and Bedroom
- Flexsteel® Deluxe Leather Sofa and Front Seats
- Passenger Seat Work Station

- Lifts on Bed Top
- Smooth-Top Mattress
- OPTIONS**
- Astoria Glazed Maple Mitered Designer Cabinets-Matte Finish
- Harbour Glazed Maple Mitered Designer Cabinets-Matte Finish
- Drop Down Bunk Bed Over Driver/Passenger Seats with Electric Release Latches and Bunk Ladder*
- Plush Pillow Top Mattress
- Folding Cockpit Table
- Side Folding Hide-A-Bed Sofa 87"*
- Fold-N-Tumble Sofa*
- Buffet Dinette*
- Combo Buffet Dinette, Two Fixed/Two Folding Chairs*
- Six Way Power Driver Seat
- King Bed* (2813 Only)

APPLIANCES

- Raised Panel Refrigerator Door Insert
- Three-Burner Range with Oven
- Range Hood with Light and Fan*
- Microwave
- Norcold® 8 Cf. Refrigerator
- 6 gal. Gas/Electric Water Heater with Electric Ignition
- OPTIONS**
- Norcold 10 Cf. Refrigerator with Icemaker on 2813 Floor Plan
- Norcold 12 Cf. 4-Door Refrigerator with Icemaker and Wood Panel Inserts*
- Icemaker Added to Standard Norcold Refrigerator

AUDIO, VIDEO & ACCESSORIES

- LED TV in Living Area (TV sizes vary per Floor Plan)
- 32" LED TV in Bedroom
- Dash Radio/CD Player with Harman/JBL 180 Watt Sound System - with Bluetooth
- DVD Player with Coax Switcher
- Rearview Color Monitor System with Audio
- Side-view Cameras Displayed onto Rearview Monitor Screen
- Winegard Digital Crank-Up TV Antenna
- TV Jack and 110 Volt Recept in Door Side Exterior Storage Compartment
- Satellite Dish Prep on Roof
- 10 Bc Fire Extinguisher, Smoke Detector, Propane and Carbon Monoxide Detector
- OPTIONS**
- WiFiRanger Sky3 Pack Router
- Winegard Cellular In Motion Wifi
- Winegard Cellular In Motion Wifi Prep WiFi Ranger SkyPro Cellular Router
- SiriusXM® Radio Capability with Antenna (Does Not Include Monthly Subscription*)
- Xite Dash Radio, 6" Monitor with Rand McNally Navigation

***Check with dealership on floor plan availability.**

The content in our literature depicts and describes products that are subject to change. For the most recent images and information, please visit NewmarCorp.com.

QUALITY YOU CAN FEEL

Like a fine home, the 2019 Bay Star and Bay Star Sport are framed 16 inches on center, and are covered by a BriteTEK™ roof with walkable decking and an integrated gutter rail.

BAY STAR SPORT

FLOOR PLAN	ENGINE HP	AXLE RATIO	FUEL CAP.	WHEEL BASE	FRONT GAWR	REAR GAWR	TAG GAWR	GVWR	GCWR	APP. UVW	APP. NCC
2702	320	4.30	80 gal.	172	7000 lb.	12000 lb.	n/a	18000 lb.	23000 lb.	15190 lb.	2810 lb.
2813	320	5.38	80 gal.	184	7500 lb.	13500 lb.	n/a	20500 lb.	26000 lb.	16800 lb.	3700 lb.
3008	320	5.38	80 gal.	200	7500 lb.	13500 lb.	n/a	20500 lb.	26000 lb.	17150 lb.	3350 lb.
3014	320	5.38	80 gal.	200	7500 lb.	13500 lb.	n/a	20500 lb.	26000 lb.	17300 lb.	3200 lb.
3226	320	5.38	80 gal.	208	7500 lb.	13500 lb.	n/a	20500 lb.	26000 lb.	17700 lb.	2800 lb.
3307	320	5.38	80 gal.	216	8000 lb.	15000 lb.	n/a	22000 lb.	26000 lb.	17900 lb.	4100 lb.

BAY STAR

FLOOR PLAN	ENGINE HP	AXLE RATIO	FUEL CAP.	WHEEL BASE	FRONT GAWR	REAR GAWR	TAG GAWR	GVWR	GCWR	APP. UVW	APP. NCC
3014	320	5.38	80 gal.	200	8000 lb.	15000 lb.	n/a	22000 lb.	26000 lb.	17700 lb.	4300 lb.
3124	320	5.38	80 gal.	200	8000 lb.	15000 lb.	n/a	22000 lb.	26000 lb.	18237 lb.	3763 lb.
3226	320	5.38	80 gal.	208	8000 lb.	15000 lb.	n/a	22000 lb.	26000 lb.	18308 lb.	3682 lb.
3401	320	6.17	80 gal.	228	9000 lb.	15500 lb.	n/a	24000 lb.	30000 lb.	19665 lb.	4335 lb.
3408	320	6.17	80 gal.	234	9000 lb.	15500 lb.	n/a	24000 lb.	30000 lb.	20573 lb.	3427 lb.
3414	320	6.17	80 gal.	228	9000 lb.	15500 lb.	n/a	24000 lb.	30000 lb.	19148 lb.	4852 lb.
3419	320	6.17	80 gal.	234	9000 lb.	15500 lb.	n/a	24000 lb.	30000 lb.	20573 lb.	3427 lb.
3609	320	6.17	80 gal.	242	9000 lb.	15500 lb.	n/a	24000 lb.	30000 lb.	20880 lb.	3120 lb.
3626	320	6.17	80 gal.	252	9000 lb.	15500 lb.	n/a	24000 lb.	30000 lb.	20538 lb.	3426 lb.
3628	320	6.17	80 gal.	252	9000 lb.	15500 lb.	n/a	24000 lb.	30000 lb.	20538 lb.	3462 lb.

The content in our literature depicts and describes products that are subject to change. For the most recent images and information, please visit NewmarCorp.com.

Lengths, heights, widths and dry weights are approximate. Weight will vary based on optional equipment added to the above base weight.

GAWR: Gross Axle Weight Rating is the maximum permissible weight for an axle.

GVWR: Gross Vehicle Weight Rating is the maximum permissible weight for a fully loaded motor coach.

GCWR: Gross Combination Weight Rating is the value specified by the manufacturer of the vehicle as the maximum allowable loaded weight of this motor coach and any towed trailer or towed vehicle.

UVW: Unloaded Vehicle Weight is the weight of this motor coach as built at the factory with full fuel, engine oil and coolants. Does not include cargo, fresh water, propane gas or dealer-installed accessories.

NCC: Net Carrying Capacity is the maximum weight of all occupants, including the driver, personal belongings, food, fresh water, waste water, propane gas, tools, tongue weight of towed vehicle, dealer-installed accessories, etc., that can be carried by the motor coach.

Specifications supplied by the chassis manufacturer.

Bay Star Sport; Bay Star:

Roof R-Value = 21

Sidewall R-Value = 11

Floor R-Value = 11

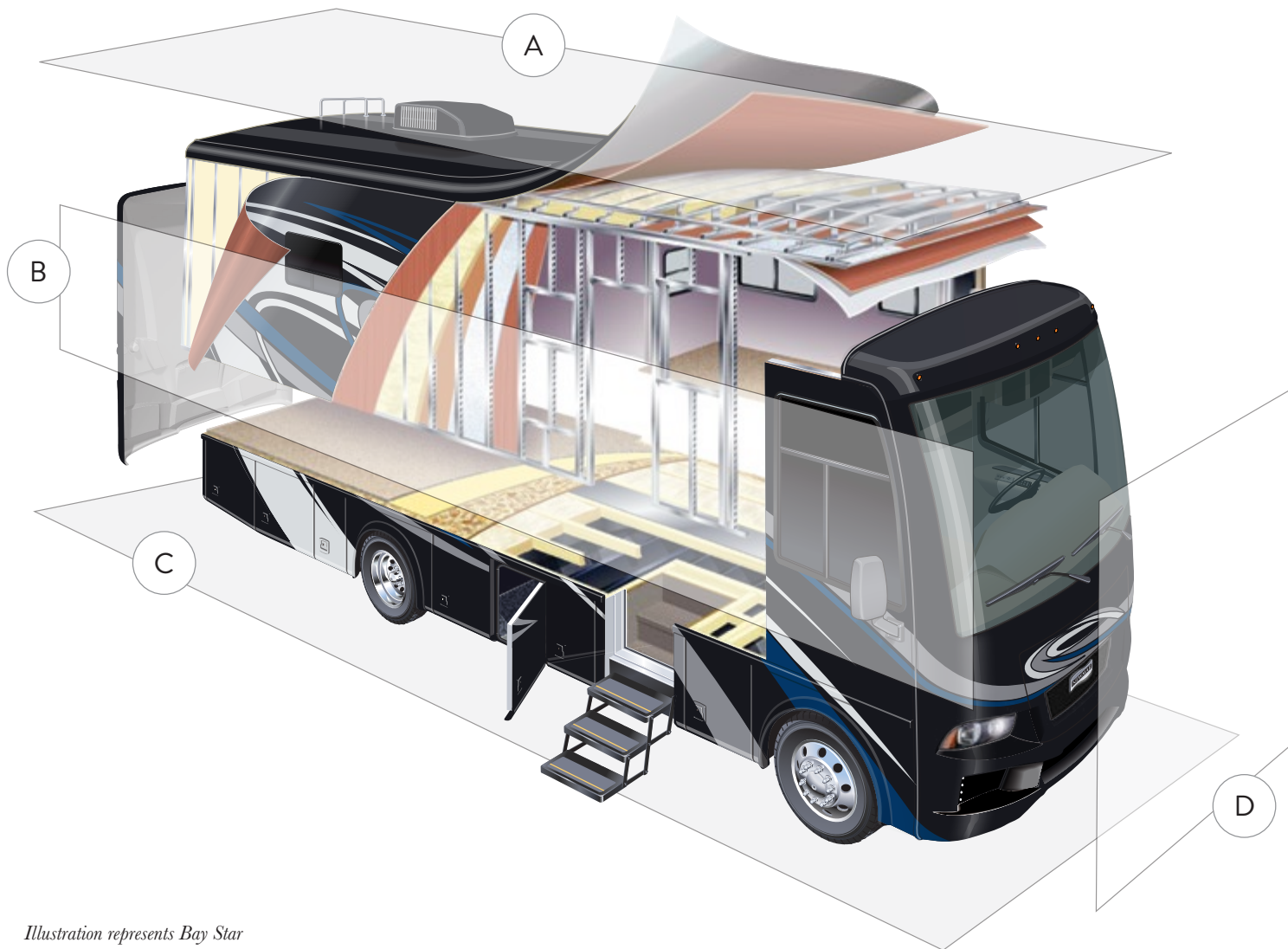


Illustration represents Bay Star

A. ROOF

BriteTEK™ Roof with Walkable Decking

Batten Insulation

A/C Ducting

16" on Center Aluminum Framing

Kraft Paper Vapor Barrier

5/8" Bead Foam

3/16" Panel

Padded Vinyl Overlay

B. SIDEWALL

Interior Wall Panel

5/8" Bead Foam

Kraft Paper Vapor Barrier

Batten Insulation

Composite One-Piece Gelcoat Exterior Sidewall

Aluminum Framing

C. FLOOR

Carpet

Carpet Padding

5/8" Floor Decking

Batten Insulation

16" on Center Wood Framing

Polyethylene Moisture Barrier

D. EXTERIOR

13.5M Penguin Central Air Conditioner

One-Piece Windshield

Frameless, Tinted Safety Glass Windows

OUR PARTNERS

Newmar Quality Begins With The Company We Keep

You deserve class-leading performance from names you can trust. That's why we only work with suppliers dedicated to providing our customers with unrivaled quality, comfort, and support.



BASF

The Coatings division of BASF is a global expert in the development and production of innovative and sustainable OEM and refinish coatings that deliver solutions beyond your imagination.



INDUSTRIAL FINISHES

Industrial Finishes has supported RV manufacturers for over four decades. The Industrial Finishes paint process delivers uncompromising quality, providing your coach with a true "Masterpiece" finish.



FLEXSTEEL®
RECREATION

FLEXSTEEL RECREATION

Flexsteel Recreation offers innovative furniture designed for a life that rarely sits still. Comfortable and space-saving, Flexsteel furniture ensures your RV is always ready for dining, sleeping, or hosting guests.



SONY

Beautifully designed Sony TVs and Blu-ray players combine to deliver an immersive picture and true-to-life sound. Revolutionize every aspect of your in-coach entertainment experience with Sony.



Driven By You

FREIGHTLINER CUSTOM CHASSIS

Freightliner Custom Chassis are renowned for their exceptional ride, excellent maneuverability, advanced chassis technology, and nationwide 24/7 factory-direct support.



SPARTAN MOTORS

Spartan Motors is an American company with over 30 years of experience designing and manufacturing the premier motorhome chassis, which provides superior performance, exceptional safety ratings, and industry-leading technology.



OUR PEOPLE MAKE *the* DIFFERENCE

*Newmar was founded in 1968 for one simple reason:
to build a better RV.*

*Since then, we've focused our efforts and energy on creating
residential-quality "homes on wheels," complete with
handmade cabinetry and designer décors.*

*And every Newmar is handcrafted one at a time by men and
women who have spent an average of eight years assembling
them, resulting in superior-quality coaches that fully surpass
their mass-produced competition.*

*Here, we don't just take the responsibility of designing,
engineering, and constructing your motorhome seriously, we
take it personally. Because in the end, our goal is not to win
your trust, but earn it. Not once, but every single time you
hit the road.*

Join us, and discover the Newmar difference for yourself.



WHEN YOU KNOW
the DIFFERENCE



Newmar Corporation | 355 N Delaware St | PO Box 30 | Nappanee, IN 46550-0030 | 574-773-7791 | Fax 574-773-2895

NewmarCorp.com